

MEDALLIST SERIES

For small to moderate homes with 3/4" plumbing.

- Features: 5.3 gpm
- Time clock style valve
- Softliner® models
- 6.7 gal. fiberglass tank
- 3/4" control valve for 3/4" plumbing
- Accusoft™ microprocessor
- Dual Safe® brine refill control
- Outdoor model available

MEDALLIST PLUS SERIES®

For small to moderate homes with 1" plumbing, or for 3/4" plumbing customers wanting an increased flow rate and minimized pressure loss.

- Features: 6.3 gpm
- Softliner® models
- 1.0 ft. - 2.0 ft. fiberglass tank
- 1" control valve for larger flow rate
- Accusoft™ microprocessor
- Dual Safe® brine refill control
- Outdoor model available

GOLD SERIES™

This full-featured state-of-the-art water softener is great for any size home and will save you in salt and water. The 1" valve allows for consistent water pressures and varying tank sizes ensure plenty of soft water.

- Features:
- Exclusive non-corrosive 6 cycle memorized control valve directs water flow during service and regeneration
- Softmeter™ meter monitors daily water use and provides advanced system diagnostics (optional)
- Culligan patented Aqua-Sense™ automatically adjusts for changes in water conditions (optional)
- Automatic bypass valve
- Dual-Safe® brine refill control
- 1.0 ft. - 3.0 ft. lifetime limited warranty Quadra-Hull® tank
- 1" control valve for larger flow rate
- Outdoor model available

HE SERIES

Our full-featured non-corrosive water softener is great for any size home. The 1" valve allows for undistorted water pressures and varying tank sizes ensure consistent quantities of soft water.

- Features:
- Softmeter™ meter monitors daily water use and provides advanced system diagnostics (optional)
- Automatic bypass valve
- 1" control valve for larger flow rate
- Dual-Safe® brine refill control
- 1.0 ft. - 3.0 ft. lifetime limited warranty Quadra-Hull® tank
- Optional smart brine control (optional), monitors salt levels
- Optional proportional brining™ only regenerates that part of the resin bed that has been exhausted, which reduces salt usage
- Optional Culligan Connect™ WiFi accessory keeps you connected
- Outdoor model available
- 1.0 ft. - 3.0 ft. lifetime limited warranty Quadra-Hull® tank

HE 1.25 SERIES

Our top-of-the-line full-efficiency water softener has the highest flow rate in residential water softeners. The 1-1/4" valve is great for large homes and small commercial purposes.

- Features:
- Softmeter™ meter monitors daily water use and provides advanced system diagnostics (optional)
- Automatic bypass valve
- 1-1/4" control valve for the largest flow rate
- Dual-Safe® brine refill control lets you choose the way you want your water to feel
- Optional patented Aqua-Sense™ automatically adjusts to changes in water conditions
- Optional smart brine control (optional), monitors salt levels
- Optional proportional brining™ only regenerates that part of the resin bed that has been exhausted, which reduces salt usage
- Optional Culligan Connect™ WiFi accessory keeps you connected
- Outdoor model available
- 1.0 ft. - 3.0 ft. lifetime limited warranty Quadra-Hull® tank

*The best flow rate is a registered trademark of Consumer Goods Corporation, LLC. Based on flow rate and flow rate during a time clock regeneration cycle.

You could give your people

Culligan Water

CULLIGAN WTR COND OF SAN ANTONIO, TEXAS

1034 AUSTIN STREET
SAN ANTONIO, TX 78208-1153
2102265344

1-800-CULLIGAN

www.culligan.com



Products manufactured and marketed by Culligan International Company (Culligan) and its affiliates are protected by patents issued or pending in the United States and other countries. Culligan reserves the right to change the specifications referred to in this literature at any time without prior notice. Culligan, Culligan Water, Aqua-Sense, Quartz 1.0, Soft-Meter, Dual-Safe, Accusoft and Dual-Safe are trademarks of Culligan International Company or its affiliates. Warranties available separately. See website warranties for applicable terms and conditions. **2018 Culligan products are backed with a 100% Satisfaction Guarantee. If you're not completely satisfied with your Culligan product within 30 days from the date of purchase, we'll refund the purchase price. See website for more details.

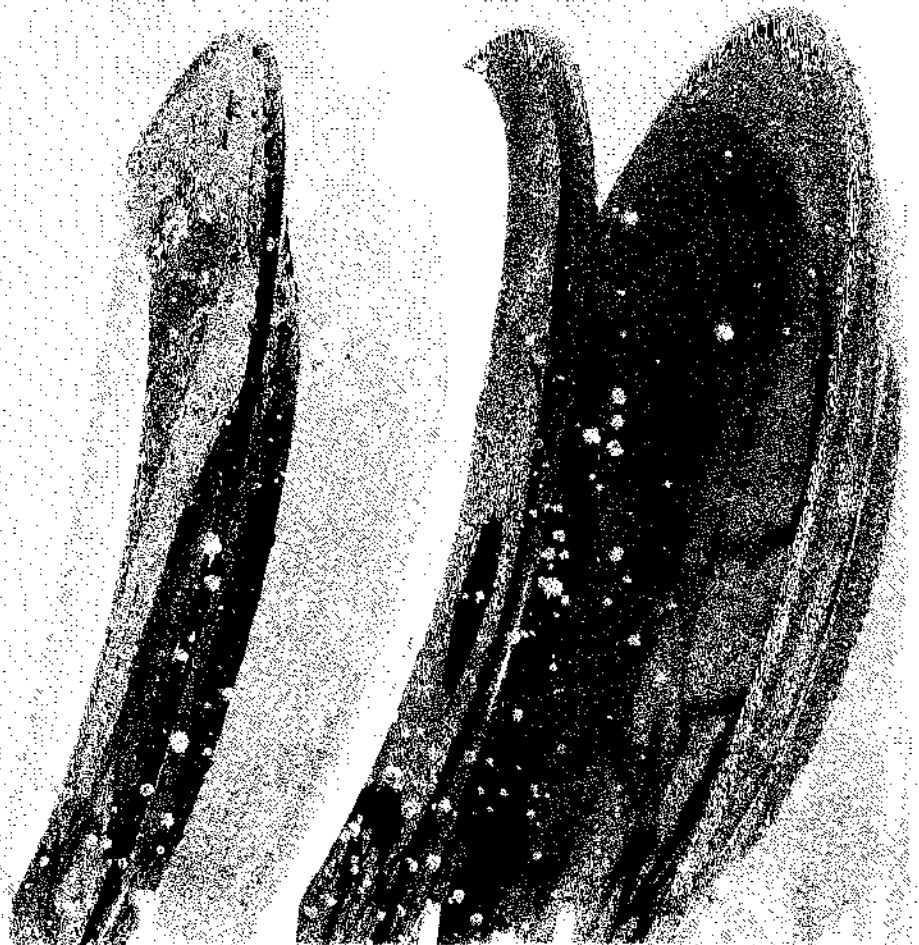
©2018 Culligan International Company

Part No. 46969-S

Culligan

WATER SOFTENERS

Full Product Line



EXPERIENCE THE DIFFERENCE CULLIGAN CAN MAKE

Culligan Limited Warranty

CULLIGAN GOLD SERIES AUTOMATIC WATER CONDITIONERS

You have just purchased one of the finest water conditioners made. As an expression of our confidence in Culligan International Company products, your water conditioner is warranted to the original end-user, when installed in accordance with Culligan specifications, against defects in material and workmanship from the date of original installation, as follows:

For a period of ONE YEAR For a period of FIVE YEARS For a period of TEN YEARS

For the LIFETIME of the original consumer purchaser. The entire conditioner Soft-Minder® meter, or Aqua-Sensor® probe if so equipped. The AccuSoft® Plus circuit board. The control valve body, ~~water filter~~ internal parts. The salt storage container, brine valve and all its component parts. The Quadra-Hull™ conditioner tank and the ~~Culligan® resin~~.

If a part described above is found defective within the specified period, you should notify your independently operated Culligan dealer and arrange a time during normal business hours for the dealer to inspect the water conditioner on your premises. Any part found defective within the terms of this warranty will be repaired or replaced by the dealer. You pay only freight from our factory and local dealer charges.

We are not responsible for damage caused by accident, fire, flood, freezing, Act of God, misuse, misapplication, neglect, oxidizing agents (such as chlorine, ozone, chloramines and other related components), alteration, installation or operation contrary to our printed instructions, or by the use of accessories or components which do not meet Culligan specifications, is not covered by this warranty. Refer to the specifications section in the installation and operating manual for application parameters.

Our product performance specifications are furnished with each water conditioning unit. TO THE EXTENT PERMITTED BY LAW, CULLIGAN DISCLAIMS ALL IMPLIED WARRANTIES, INCLUDING WITHOUT LIMITATION WARRANTIES OF MERCHANTABILITY AND FITNESS FOR PARTICULAR PURPOSE, TO THE EXTENT REQUIRED BY LAW, ANY SUCH IMPLIED WARRANTIES ARE LIMITED IN DURATION TO THE ONE-YEAR PERIOD SPECIFIED ABOVE FOR THE ENTIRE CONDITIONER. As a manufacturer, we do not know the characteristics of your water supply or the purpose for which you are purchasing a water conditioner. The quality of water supplies may vary seasonally or over a period of time, and your water usage rate may vary as well. Water characteristics can also differ considerably if your water conditioner is moved to a new location. For these reasons, we assume no liability for the determination of the proper equipment necessary to meet your requirements, and we do not authorize others to assume such obligations for us. Further, we assume no liability and extend no warranties, express or implied, for the use of this product with a non-potable water source. OUR OBLIGATIONS UNDER THIS WARRANTY ARE LIMITED TO THE REPAIR OR REPLACEMENT OF THE FAILED PARTS OF THE WATER CONDITIONER, AND WE ASSUME NO LIABILITY WHATSOEVER FOR DIRECT, INDIRECT, INCIDENTAL, CONSEQUENTIAL, SPECIAL, GENERAL, OR OTHER DAMAGES.

Some states do not allow the exclusion of implied warranties or limitations on how long an implied warranty lasts, so the above limitation may not apply to you. Similarly, some states do not allow the exclusion of incidental or consequential damages, so the above limitation or exclusion may not apply to you. This warranty gives you specific legal rights, and you may also have other rights which vary from state to state. Consult your telephone directory for your local independently operated Culligan dealer, or write Culligan International Company for warranty and service information. CULLIGAN INTERNATIONAL COMPANY One Culligan Parkway Northbrook, Illinois 60062